

Figure 1. Examples of stop closures.

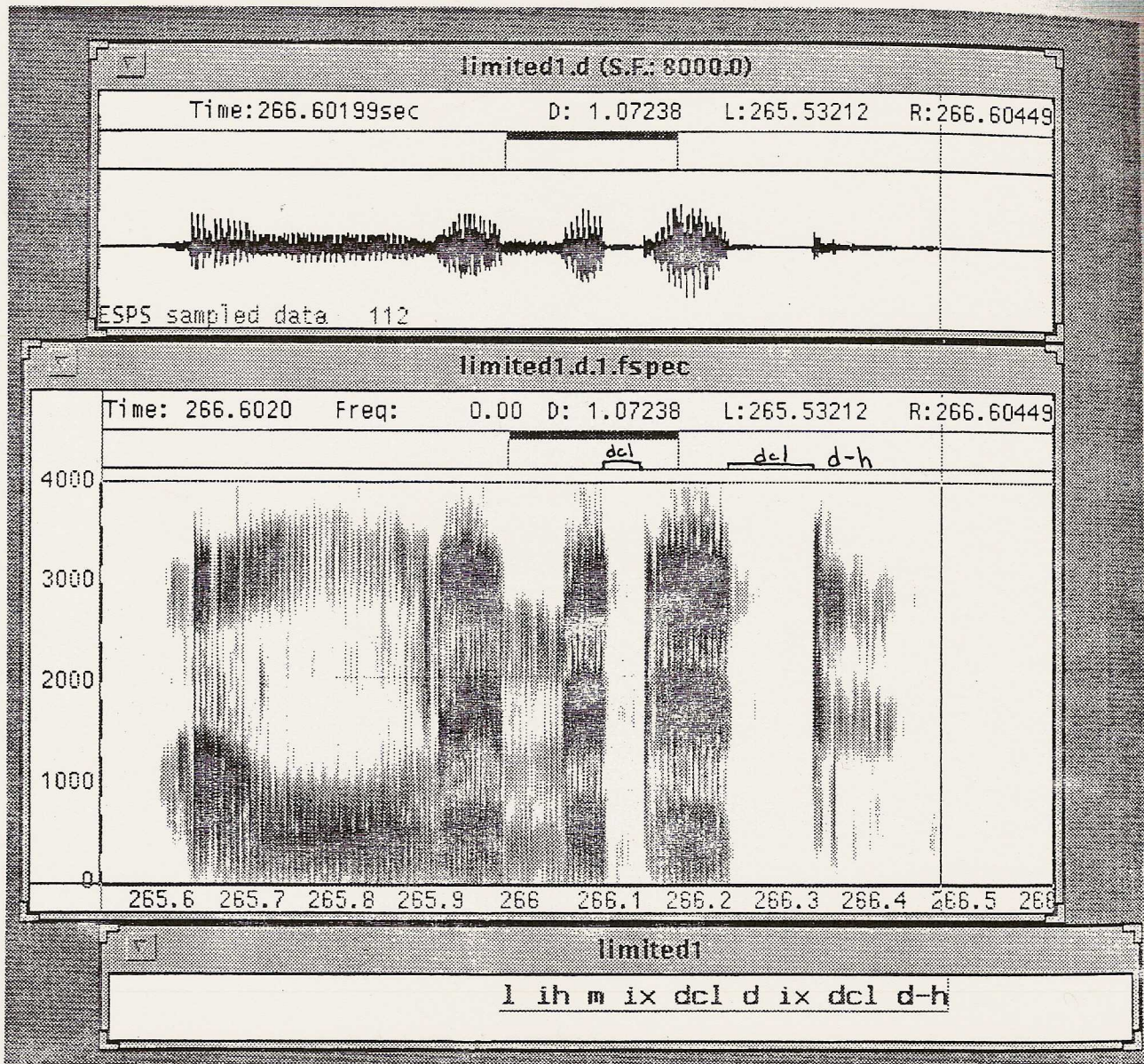


Figure 2. Examples of stop closures.

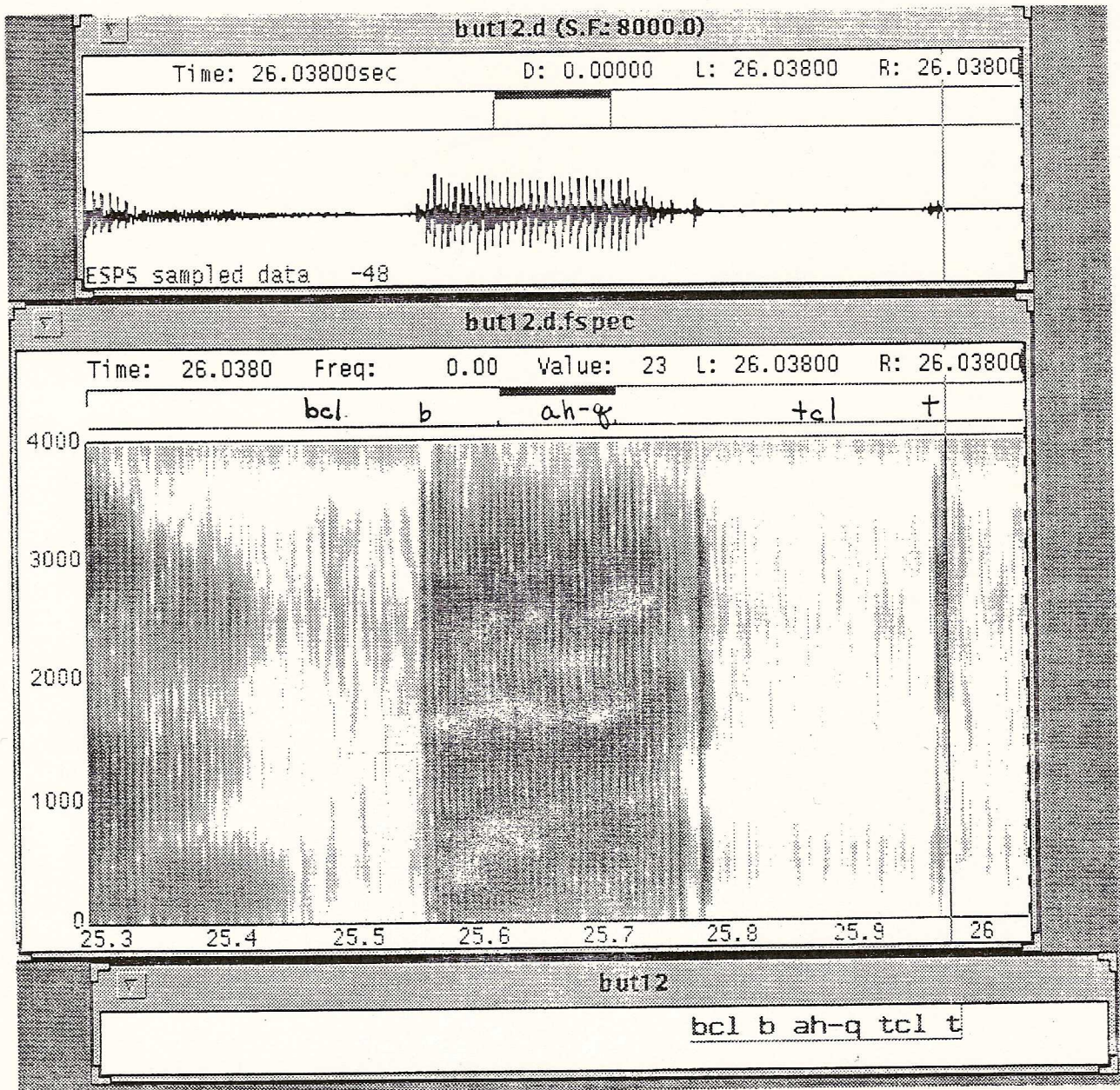


Figure 3. Example of *bh*.

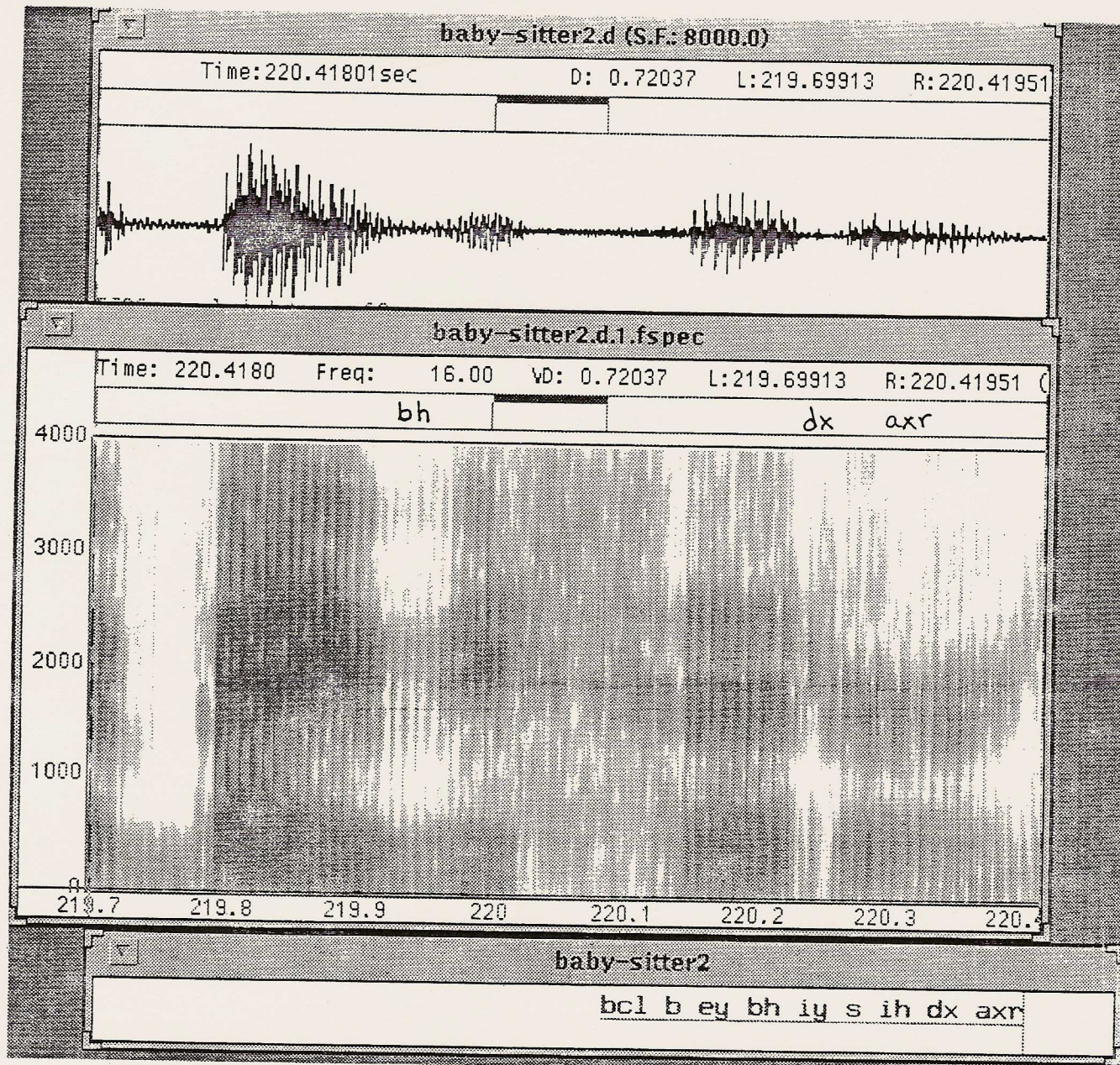


Figure 4. Example of *ph*.

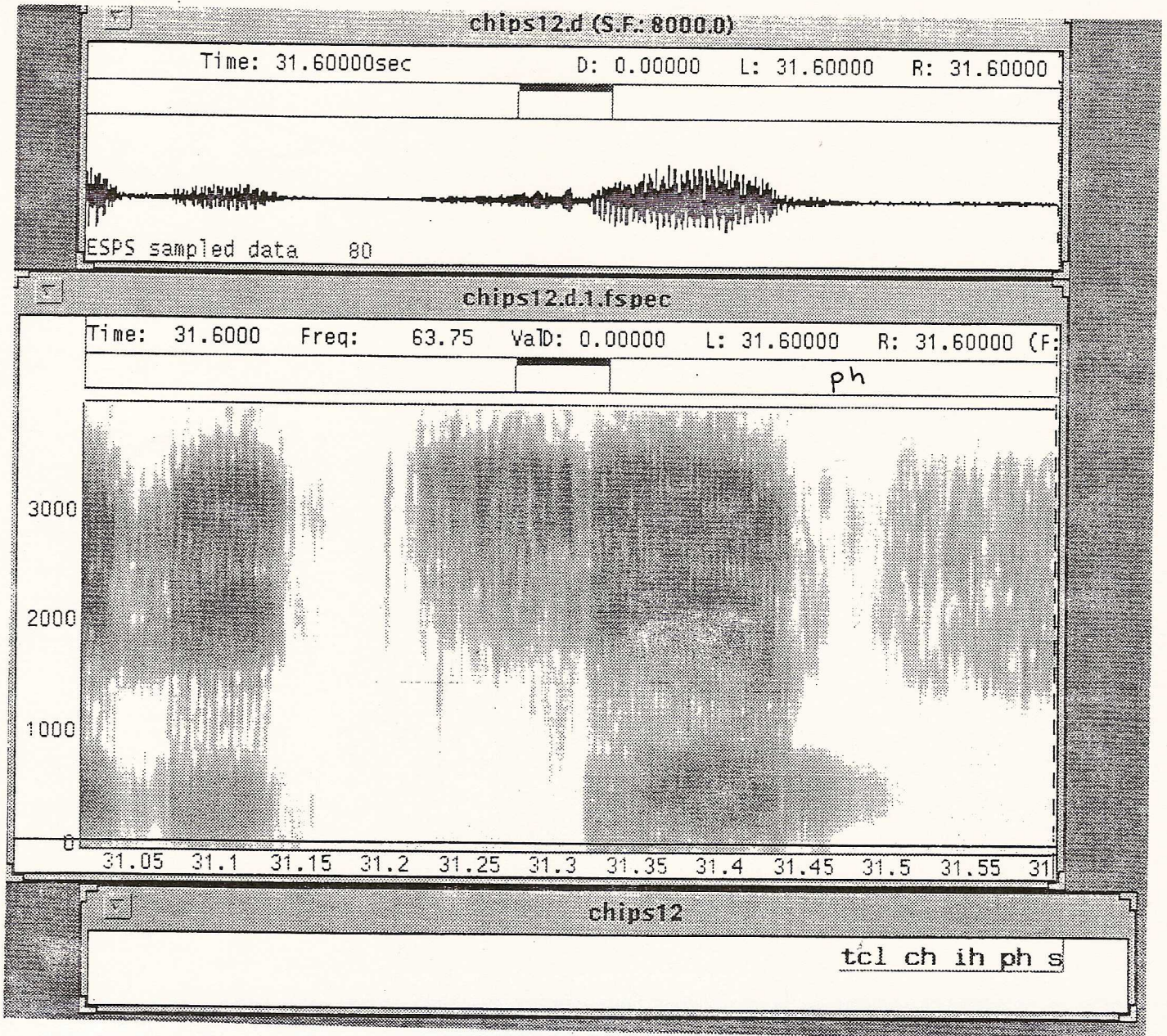


Figure 5. Example of *tfr*.

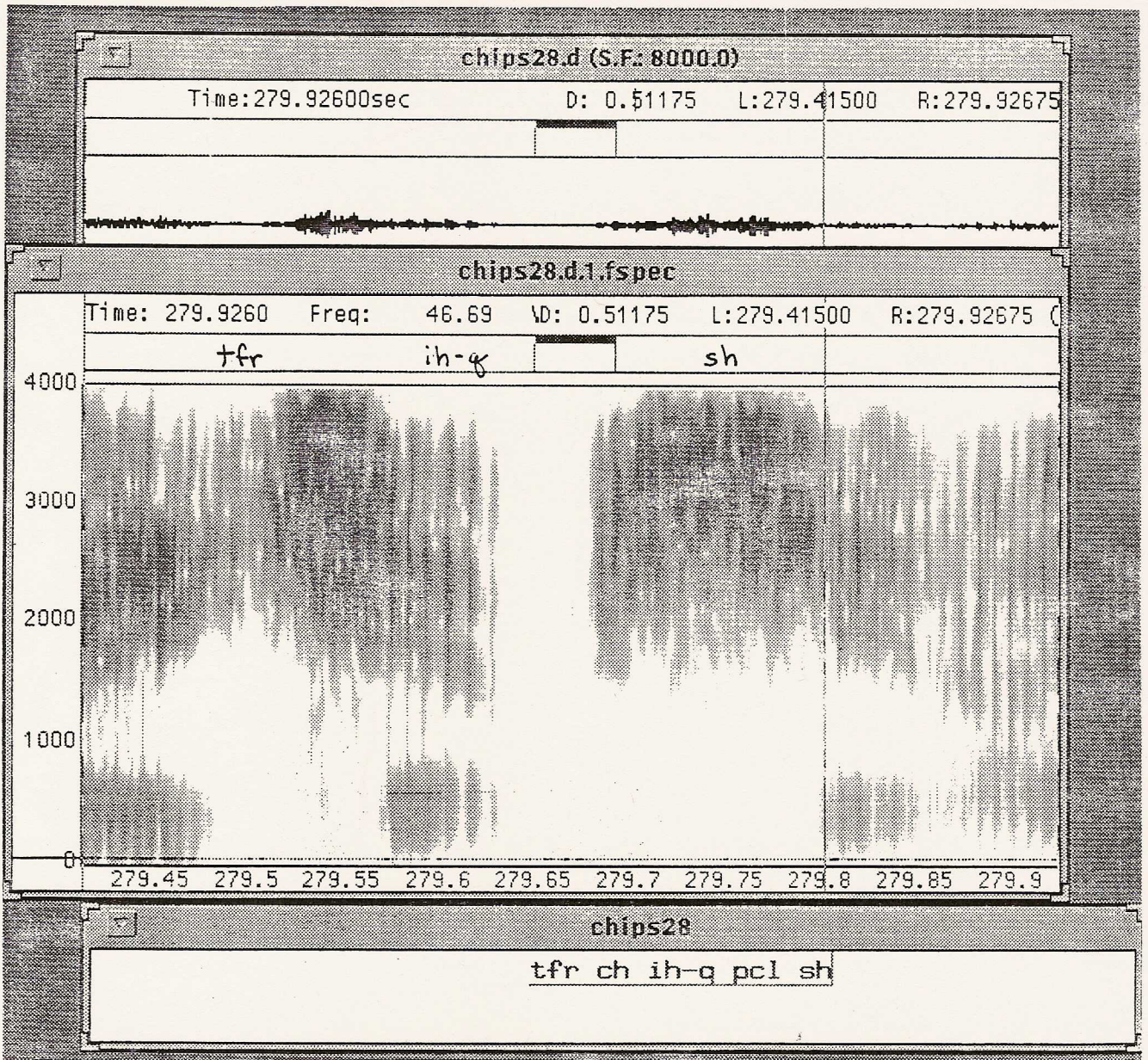


Figure 6. Example of prenasalized stop.

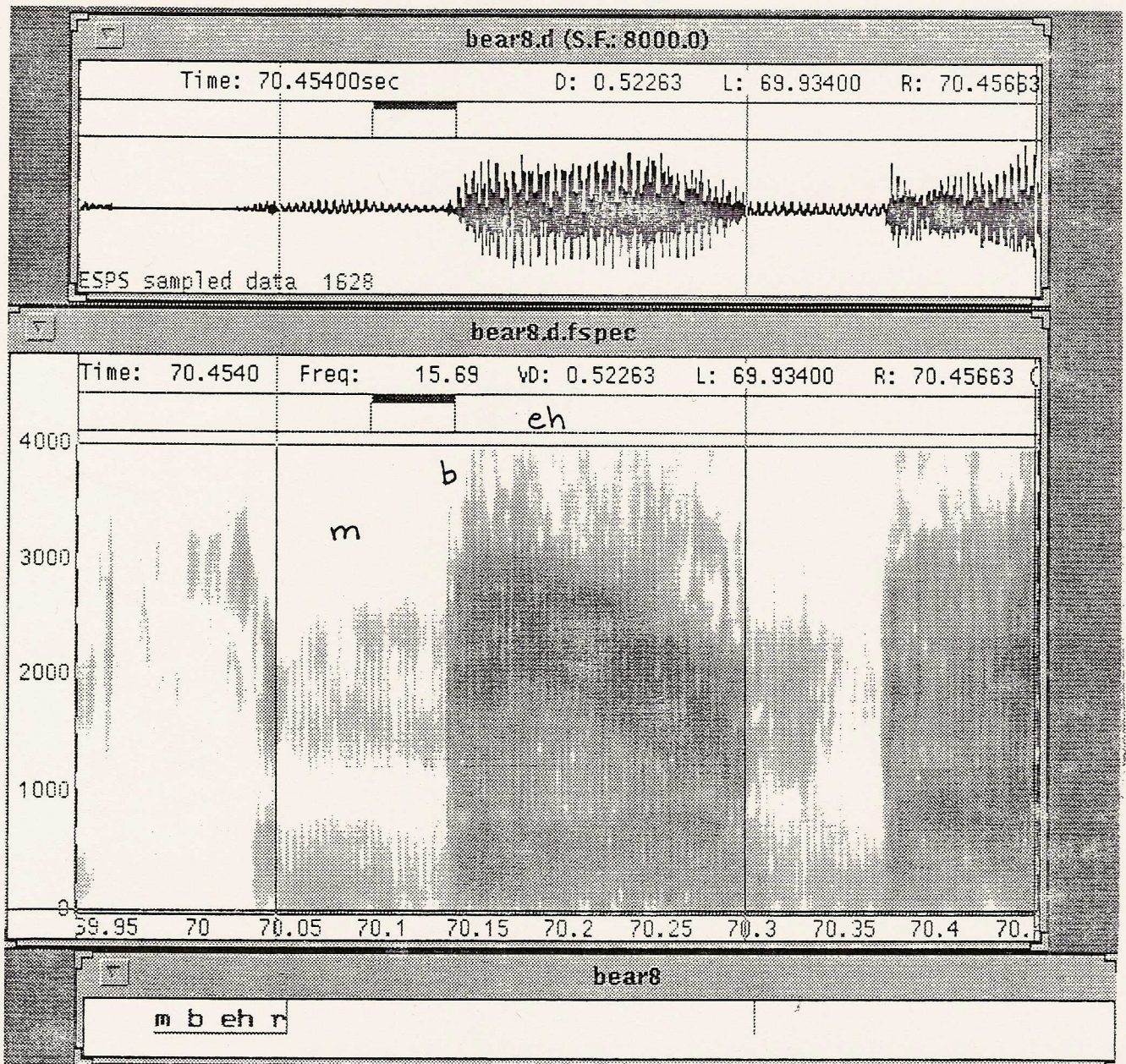


Figure 7. Example of epenthetic stop.

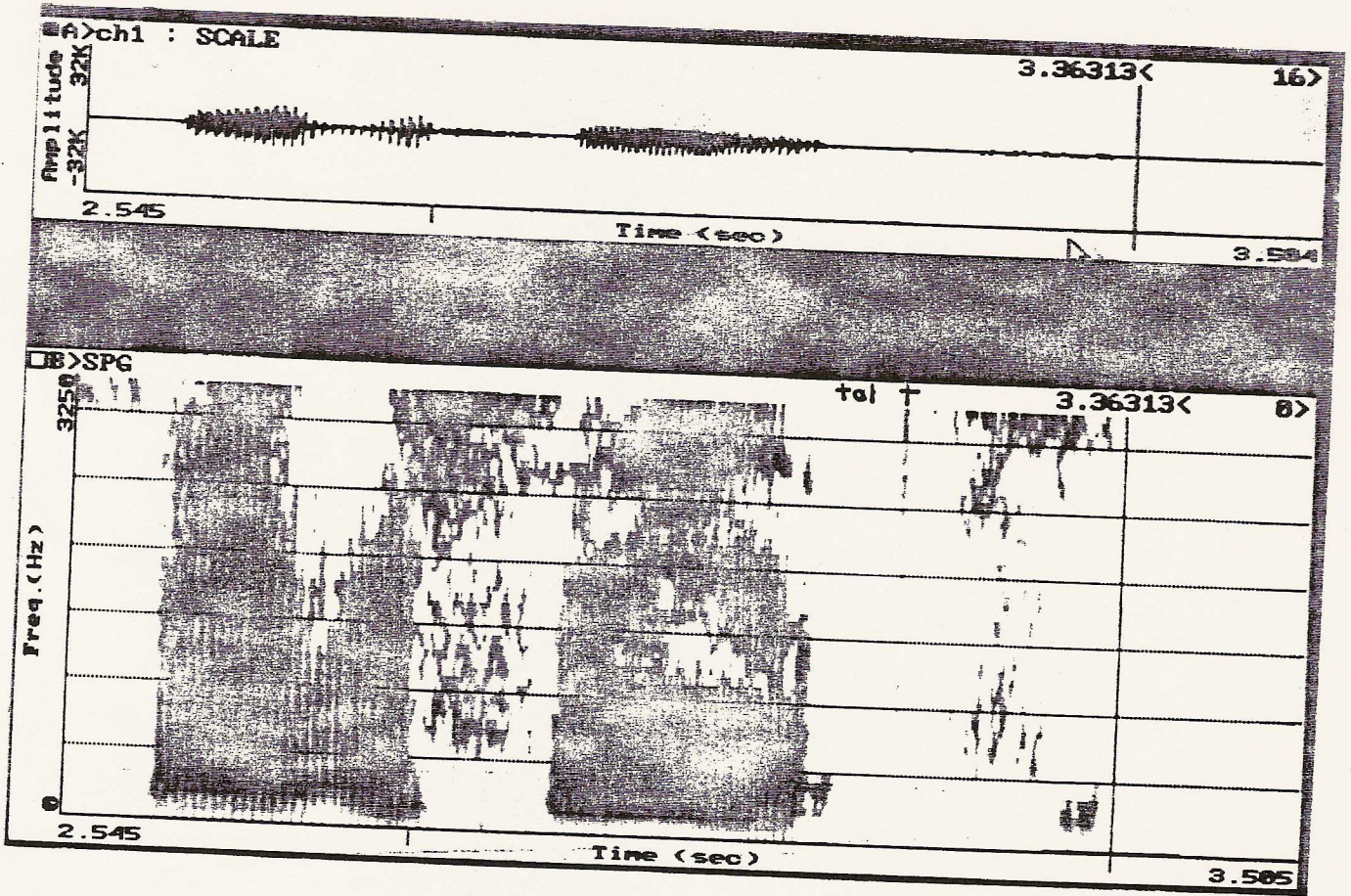


Figure 8. Example of glottalization.

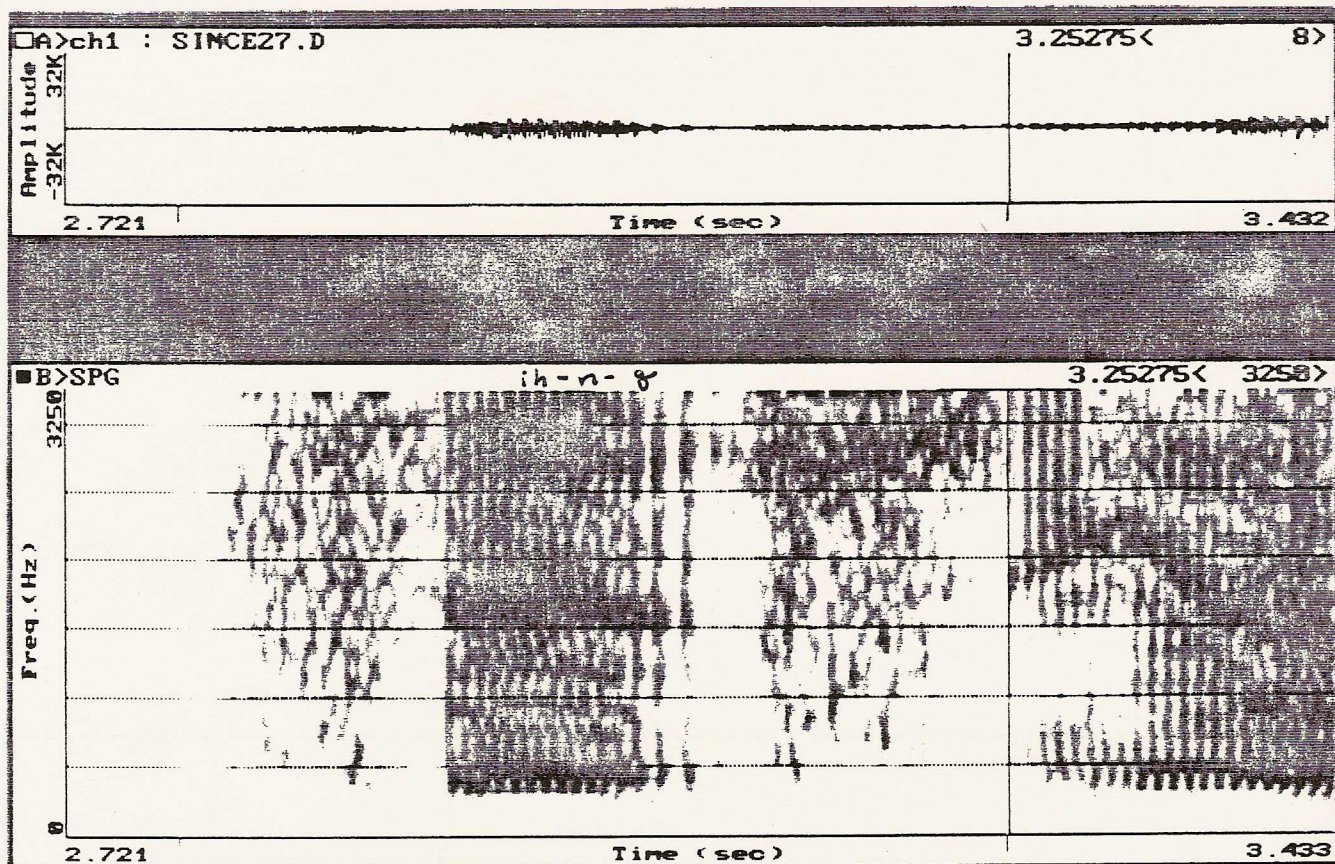


Figure 9. Example of nasal plus oral stop sequence.

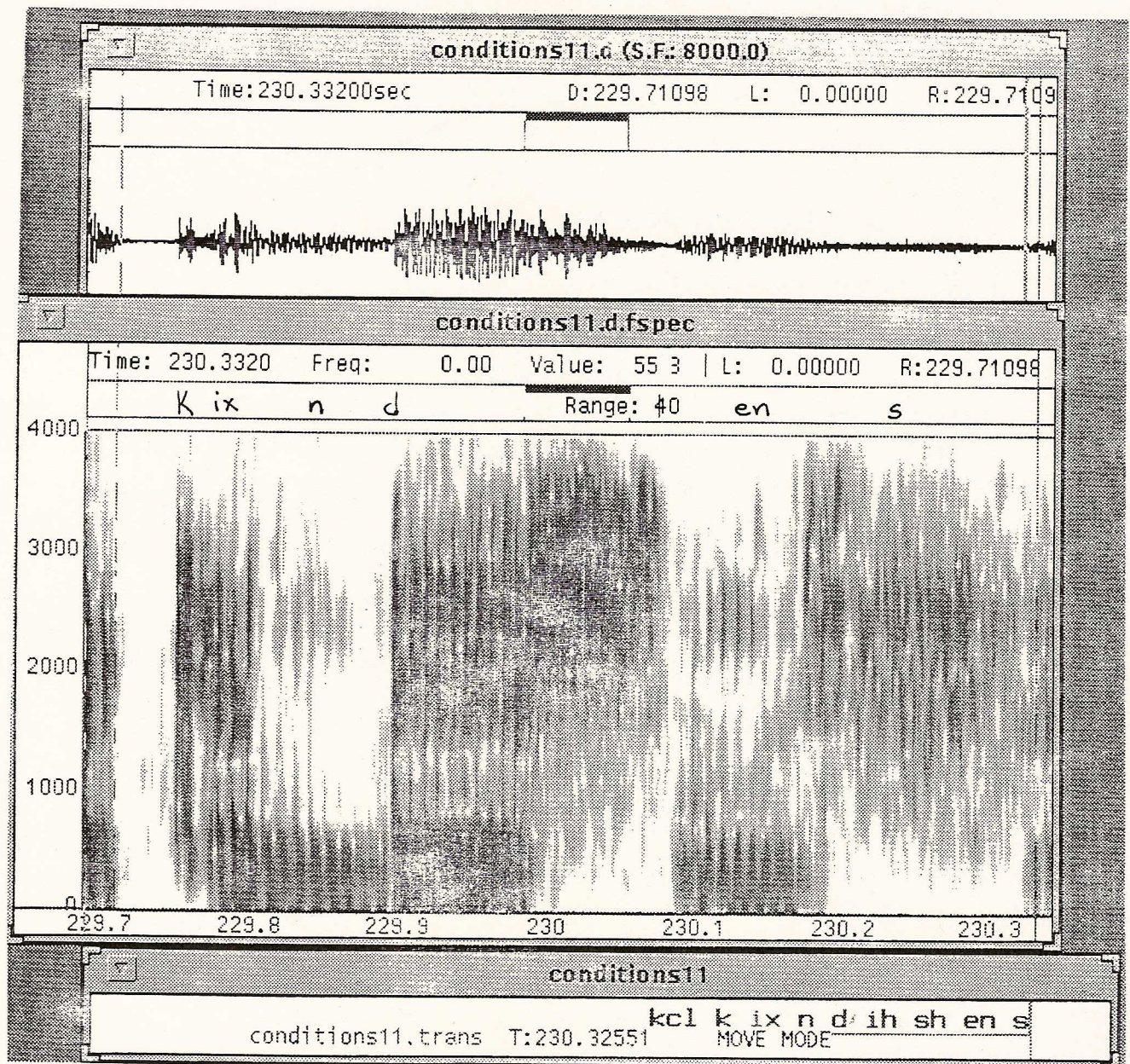


Figure 10. Example of *qcl*.

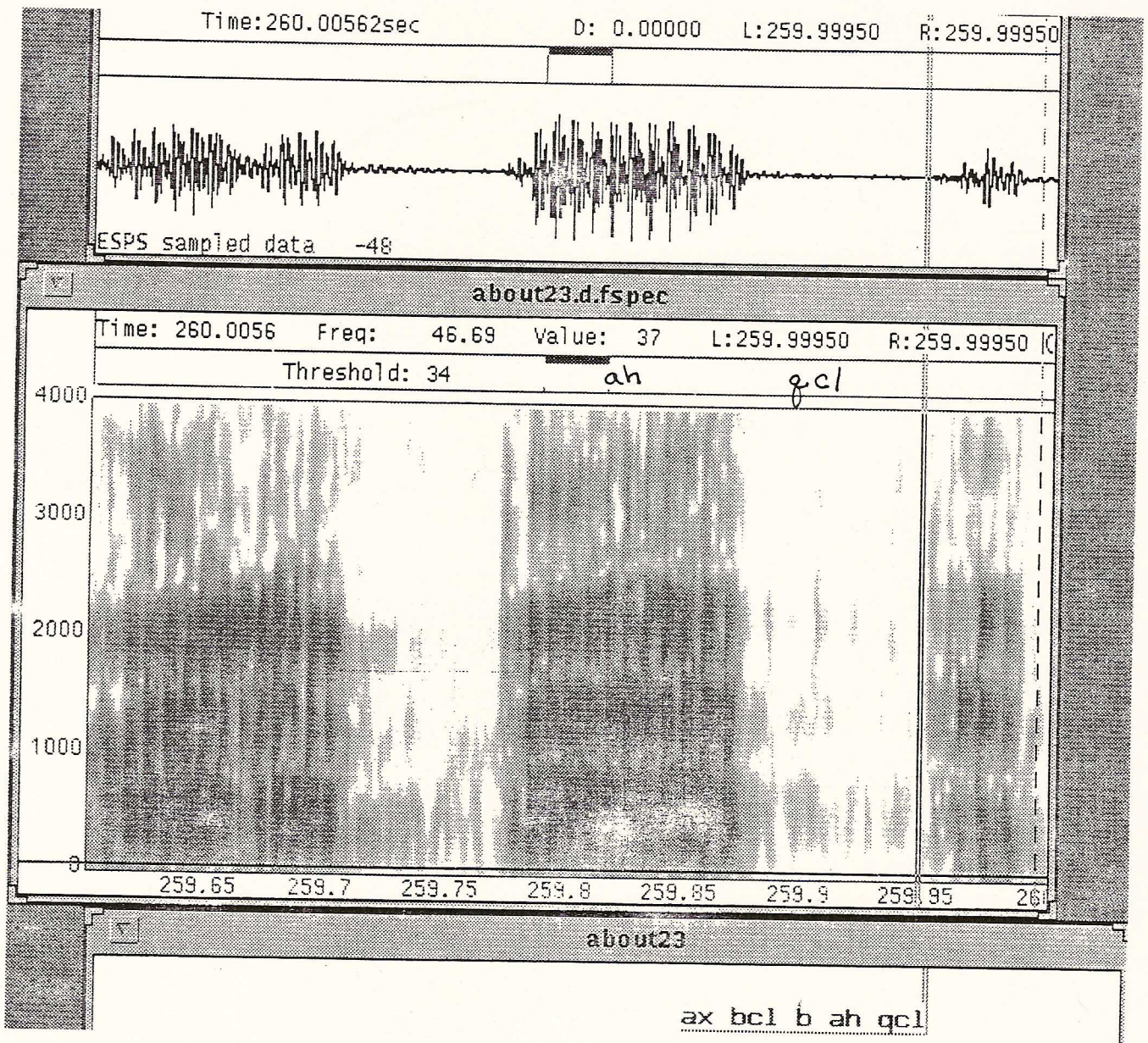


Figure 11. Example of place assimilation.

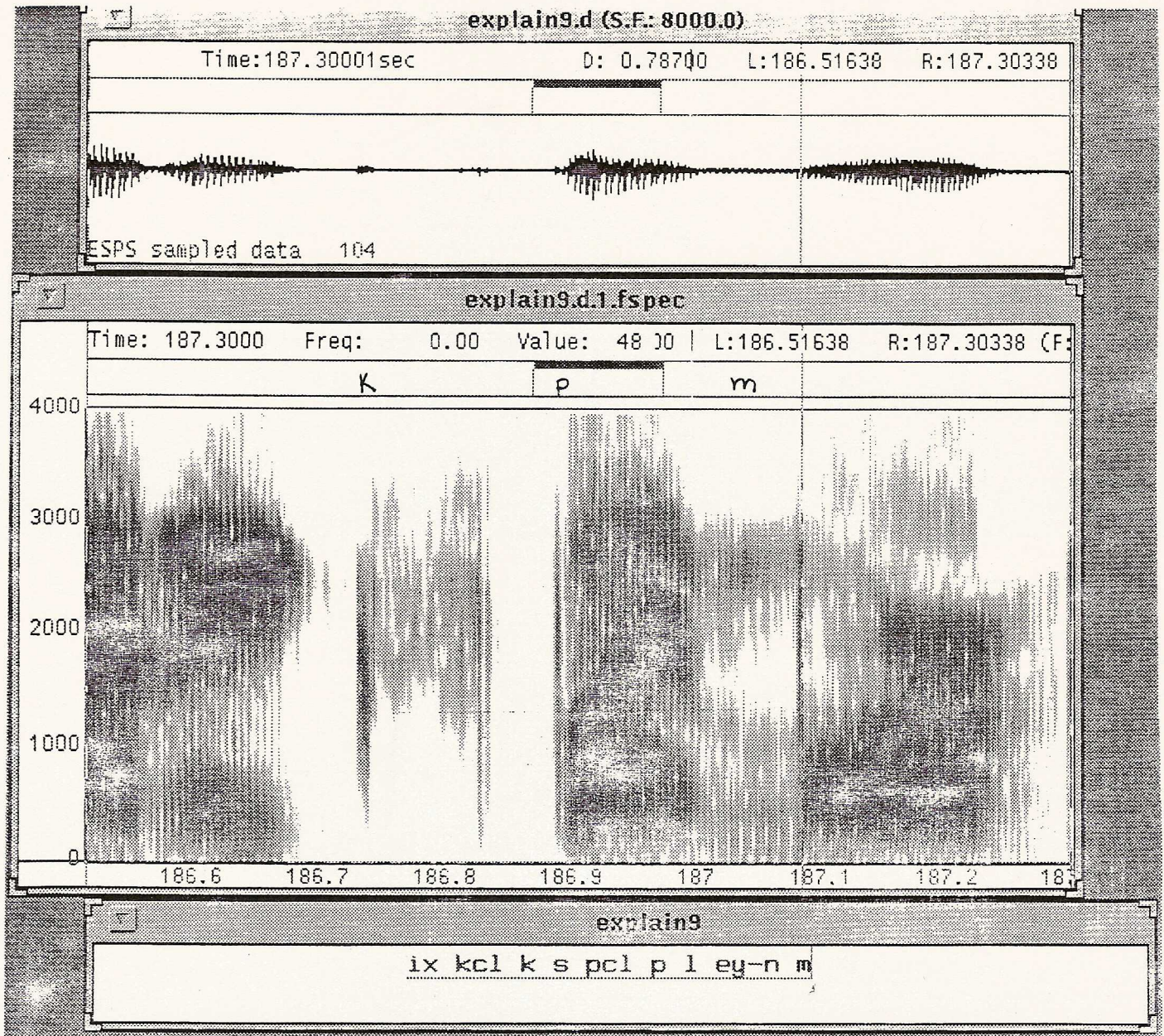


Figure 12. Example of *el*.

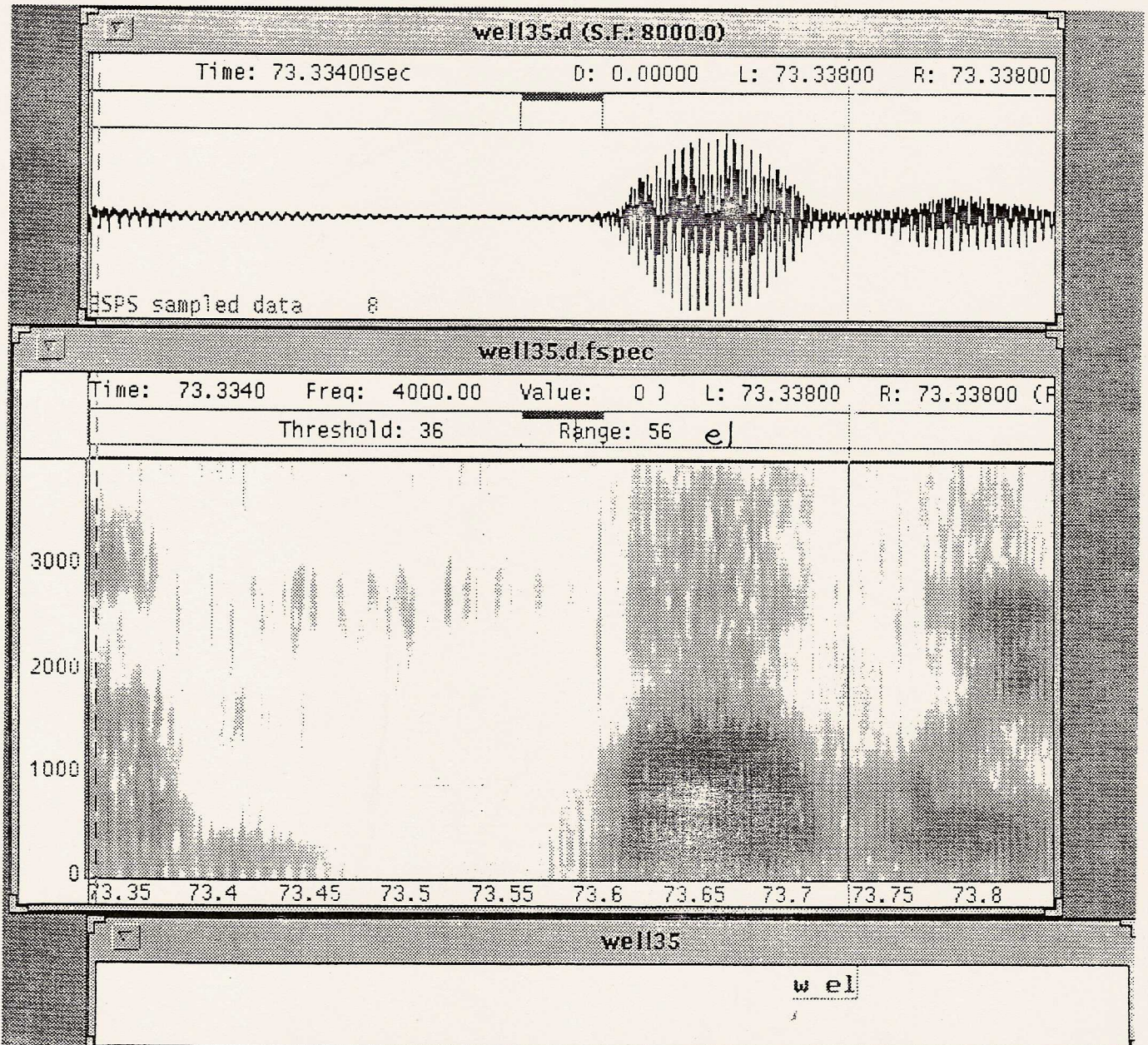


Figure 13. Example of onset *r*.

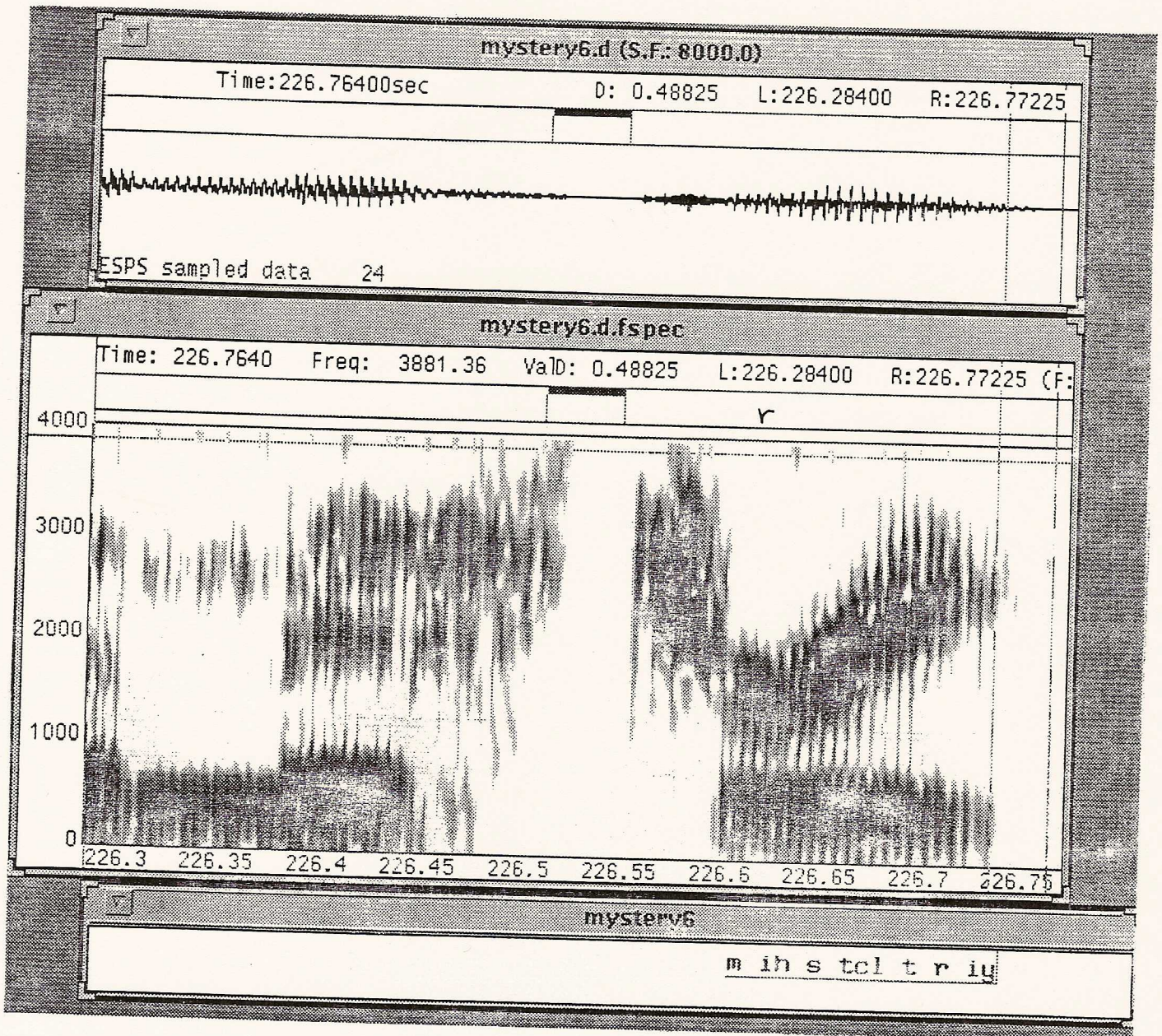


Figure 14. Example of syllabic *axr*.

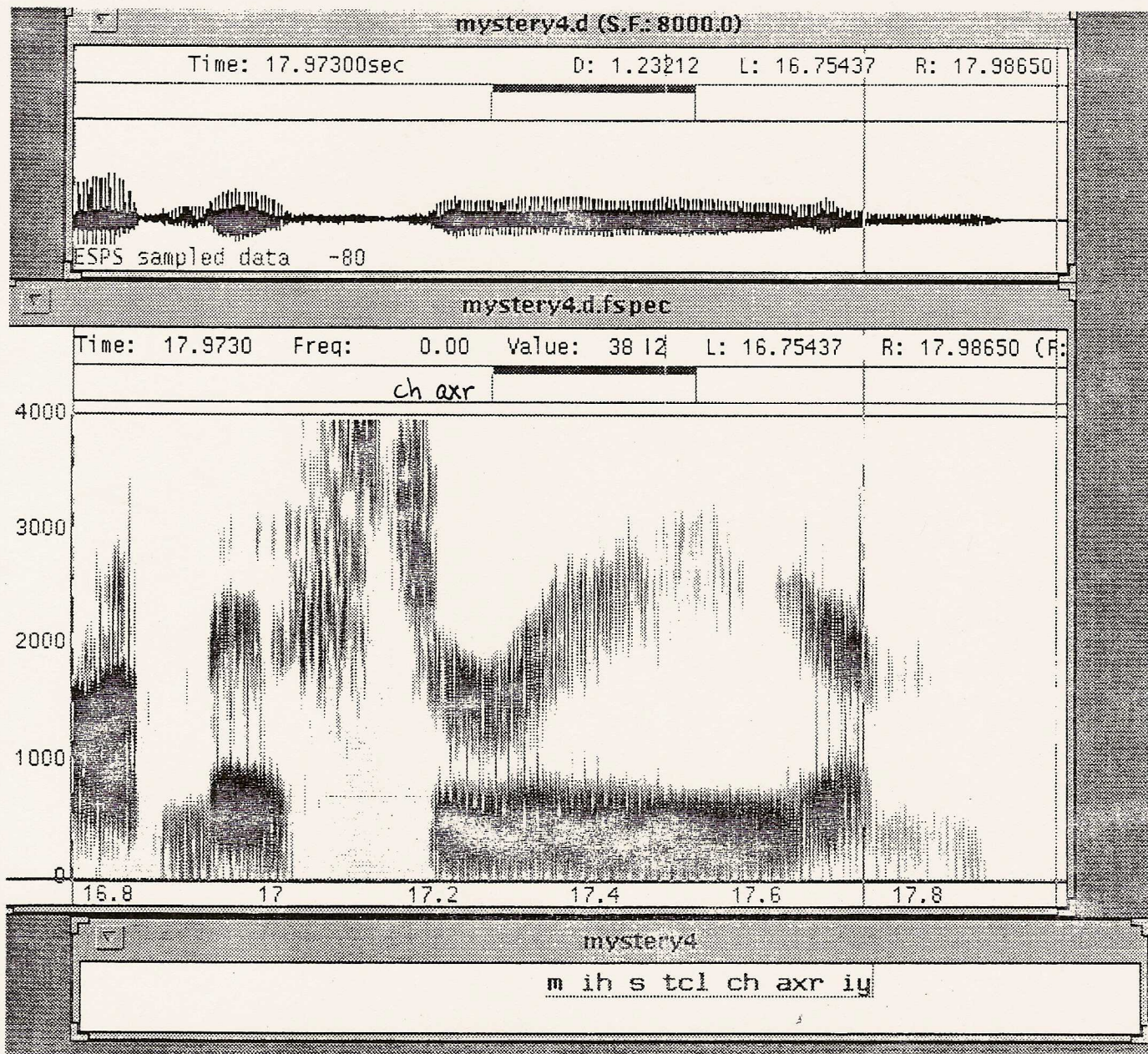


Figure 15. Example of w for /l/.

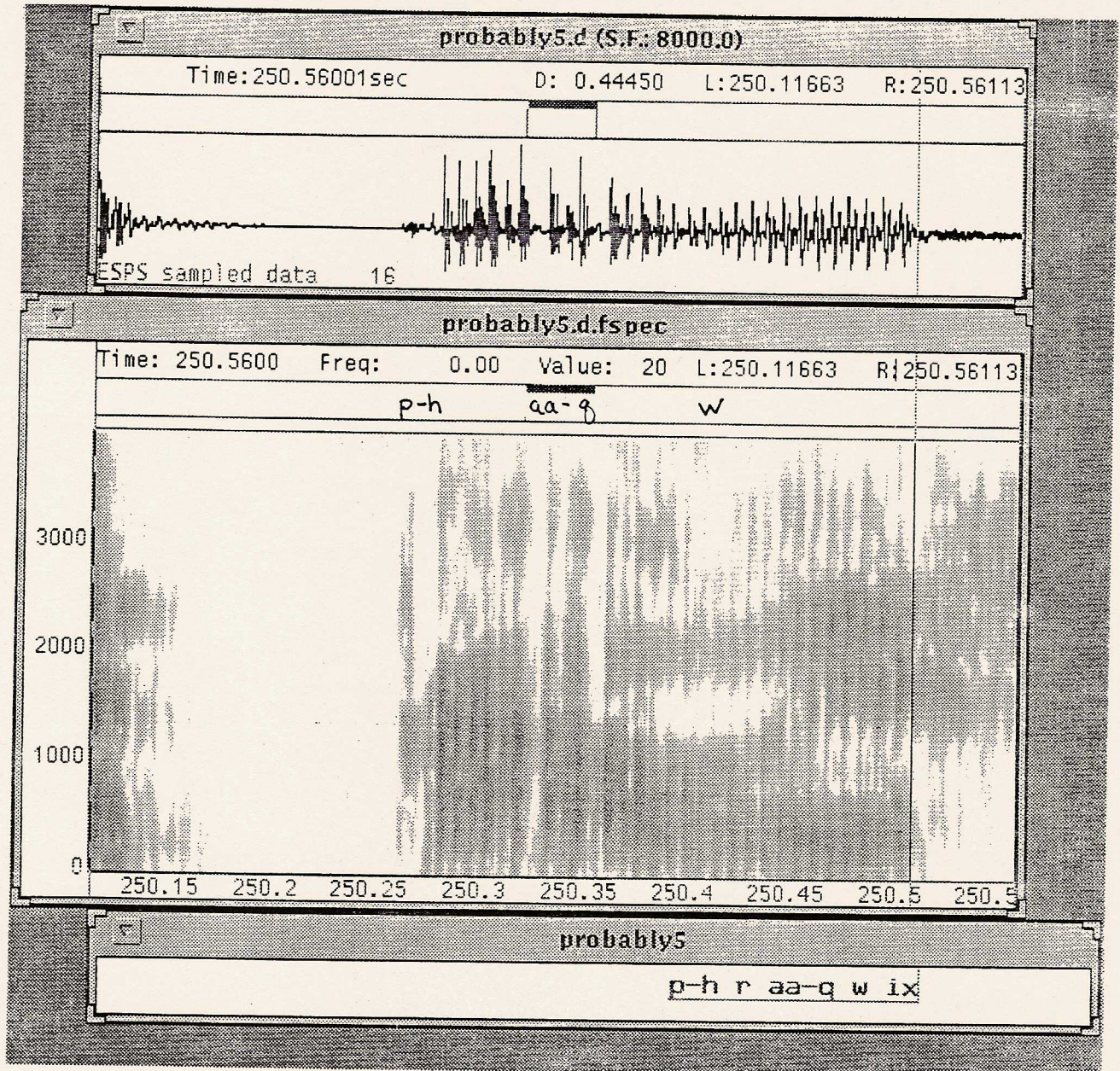


Figure 16. Example of glide-vowel coalescence.

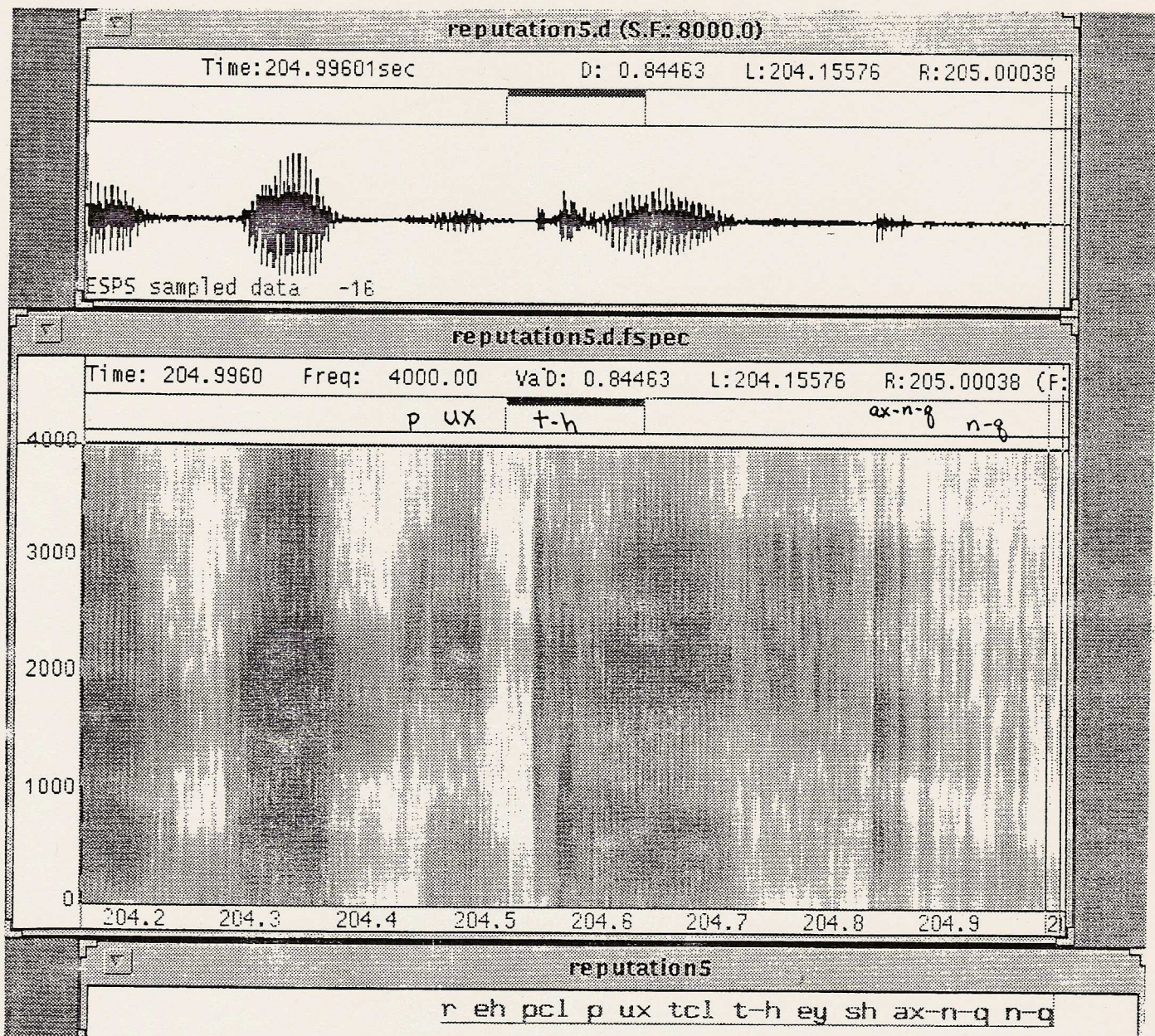


Figure 17. Two examples of voiceless vowels.

